

Quick icebreaker !

What is your biggest worry about your child starting secondary school?



Post-It note on your chair...



Write your worry on the Post-It

Stick your Post-It to our flip-chart



Moving on to Secondary School



Anne Beaty– SEND Support Advisor, L-SPA
Donna Hardcastle - SEND Support Advisor, L-SPA

Our aims today...



To answer your questions



To talk about Year 6 to Year 7 transition for children and parents



To show how secondary schools work with their students and families



To help ease anxieties and worries

Year 6 to Year 7 transition



What stays the same/similar from September onwards?

It's helpful for us adults to reflect on what similarities there are between the two phases, such as

Daily family routines

Wearing a uniform – although a different one

A timetable & lessons

Lunchtimes and playtime (now 'morning break')

Activities outside school

Weekend routines

Connecting with friends

Links already?



Year group visits
– e.g science
workshops,
sports events,
drama
productions

Parents' Evening
for older siblings

Linked work – e.g.
community choir for
events; older
children visiting the
primary school

Open Evenings/Open Days

Holiday activities
using the school
site – e.g. sports
camps

Friends/neighbours'
children attending
the school

Other times –
Events?
Requested visits?

What stays the same for additional needs?



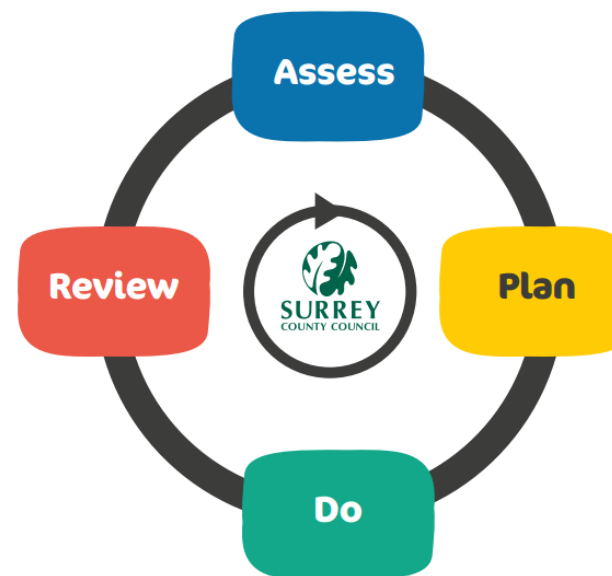
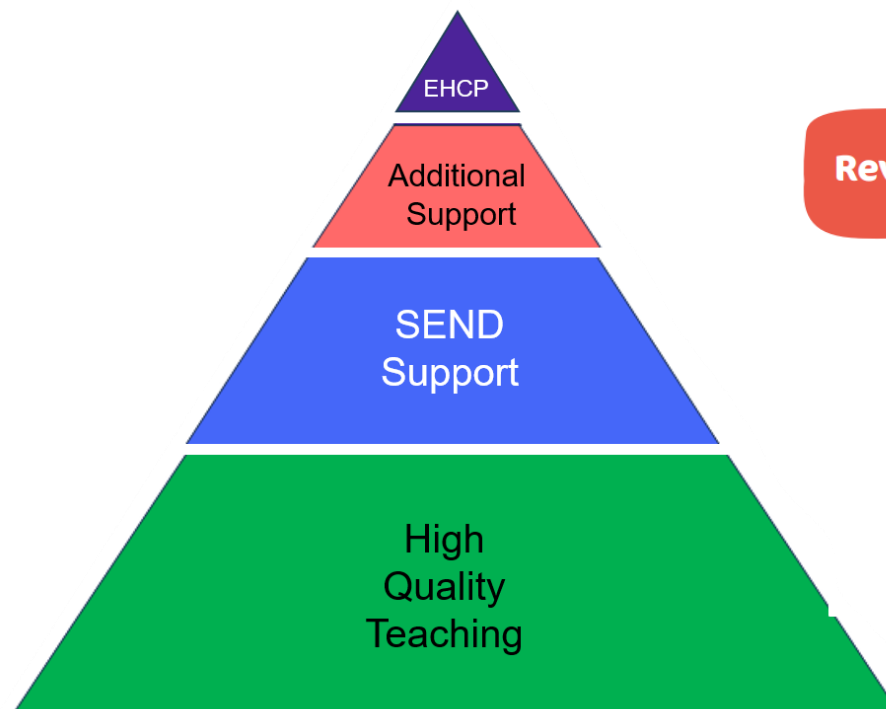
 Department for Education

 Department of Health

Special educational needs and disability code of practice: 0 to 25 years



Children and Families Act 2014



Surrey's
Local Offer

Example

How we support SEN in our classrooms

- **High Quality Teaching** considers the needs of learners which then informs planning and delivery to make learning accessible.

Teachers will use **a range of strategies**, to support learners to access and engage with the curriculum. These are **reasonable adjustments** – all part of adaptive teaching.

- Visual prompts
- Visual aids – e.g. reading rulers, coloured overlays
- Allowing for extra processing time
- Movement breaks
- Access to a quiet/safe space
- Providing de-escalation strategies
- Time out
- Adjusted entry/exit times

- Tasks broken down into chunks
- Task boards/task lists
- Physical aids
- Assistive technology
- Seating plan adjustments
- Staff training
- Enlarged font on worksheets
- Ear plugs/defenders
- Concentration aids

Primary to Secondary – what changes in our children can we expect to see?

At age 11 to 12, most are in the midst of puberty

Desire for independence is growing

Friendships are very important

They like to know that their opinions are heard and valued

“Although there will still be times when you need to put your foot down, try to hear your child out before jumping in with advice or instructions,” advises chartered educational psychologist [Julia Busch Hansen](#).

What's different – and even exciting? What do we remember?

Choosing food with fingerprint tech

Knowing what the timetable is for every day

Masses of clubs to choose from

The Drama studio!

Changing teachers every lesson

Science labs... DT rooms... Food Tech kitchens

Doing subjects I've never done before

Different uniform – I like our blazer!

Going to school by myself – meeting up with friends on the way

Having a Form Tutor and Head of Year

Using apps to see what the homework is

Walking home with friends

Lots more people to choose friends from

From March

Primary &
secondary
SENCOs link up

April-May

Yr 6 team - information
Yr 7 team – uses info on all pupils –
planning
STIPS ASPIRE events

June

Yr 7 team
- induction info for pupils & families
- plan induction programme

Late June-July

Induction day - pupils
Induction evening – families
Additional visits
Farewell activities

Late July-August

Summer activities / workshops /
Bespoke induction/introductions

September

Staggered start – Year 7 first
Year 7 adaptations – first in
lunch queue; Yr 7 playground;
specific Yr 7 spaces....

How secondary schools work with their students and families



Where to look for information?



School website

- About us
- Vision/values
- Learning/Curriculum
- Prospective families
- Staff list

- News/newsletters
- Events
- Term calendar
- Clubs

Policies

- Homework
- Anti-bullying
- Behaviour for learning
- Safeguarding

- Support/SEND/Inclusion
- SEND Policy
- SEND Information Report

Roles in Secondary Schools

Pastoral Team

Form tutors
Heads of Year
Asst Heads of Year
Heads of Houses
Learning Support / SEND

Young
Person &
their
Family

Academic Team

Subject teachers
Heads of Department
Heads of Faculty

Leadership Team

Headteacher
Deputy Heads
Assistant Heads
[SENCO]

Who do I contact?

Example

Form tutor / Head of Year

- Behaviour
- Peer relationships
- Safeguarding
- Family events
- Emotional wellbeing
- Trips/clubs
- Uniform
- Free school meals

Teacher / Head of Department or Faculty

- Homework
- Challenges with learning
- Behaviour in specific area/subjects

SENCO / Deputy SENCO

SEND interventions / provision

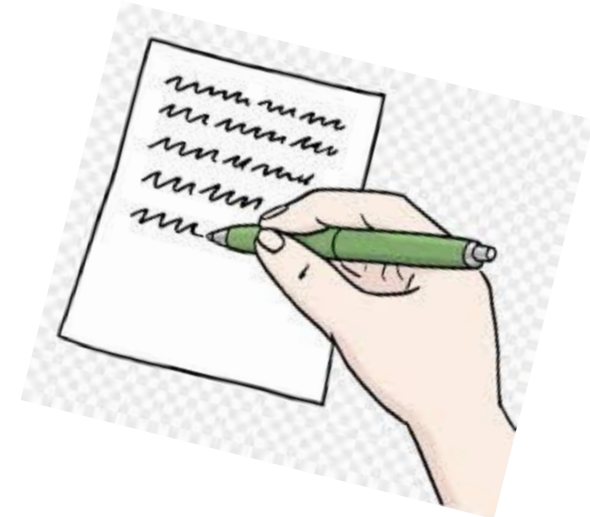
Concerns about specific learning needs
/ individual needs

Concerns about needs being met in
school

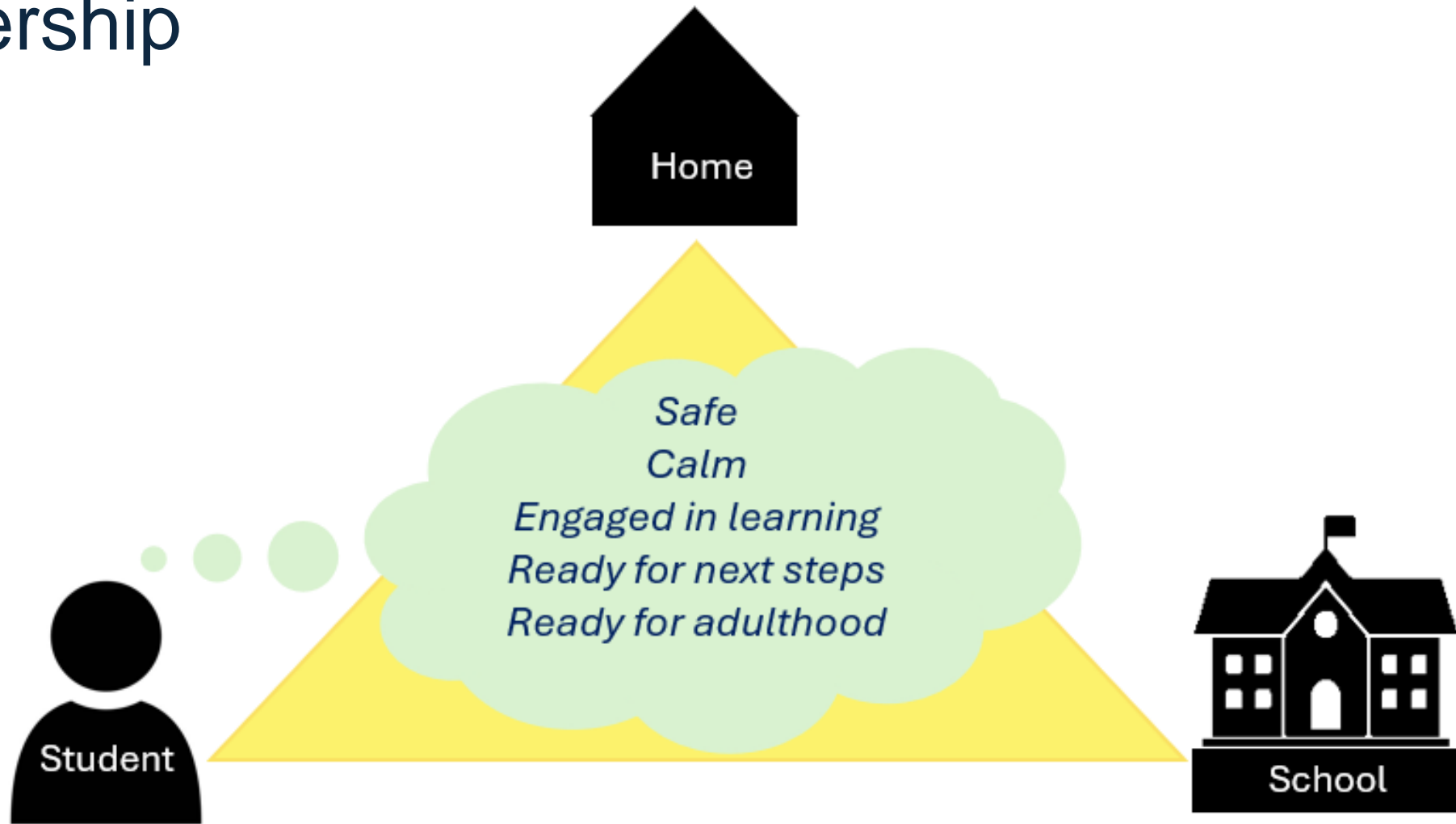
Exam Access Arrangements

How do I contact?

Email addresses
Form Tutor
Head of Year
SENCO



Partnership



The strongest support comes where home, school and the student work jointly and cohesively to overcome barriers to learning.

Year 7 –ready One Page Profile?

What do they **like**?

What are their **aspirations and ambitions**?

What are their **strengths**?

What are their **interests**?

What works well in their **current** setting?

What are they **looking forward to**?

What **worries** or upsets them?

How do they like adults to **help/support** them?

What are the **best ways to communicate** with them?

What works well to **calm** any worries?

Supporting families during transitions

Family Voice Surrey

Transition to secondary school group,

For parents thinking about how to prepare their child with additional needs for secondary school The group meets online throughout the year, usually monthly.

FVS Regular Events - Family Voice Surrey

SEND Advice Surrey

Impartial, confidential, free advice and support to parents/carers of children and young people with special educational needs and/or disabilities

SEND Advice Surrey

**Keep talking to
your schools –
that is key!**

Surrey Local Offer

Supporting your child during transitions

Suggestions for parents/carers

