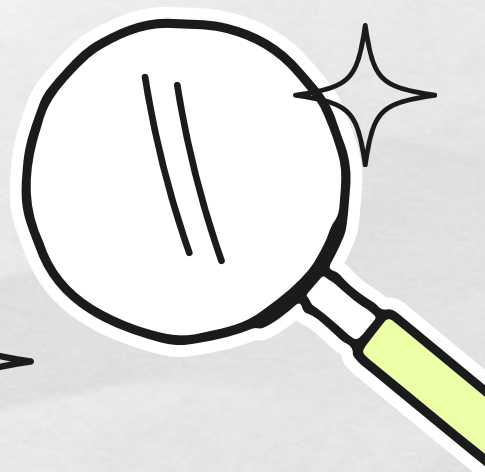


SEND NEWSLETTER

SPRING 2024

Hello and welcome to this term's SEN Newsletter. It's been another busy term here at WBJs. We would like to thank you all for your continued support. We would also like to thank all of you who signed up for, and attended parents evening appointments with us.



1

GOODBYE MRS O'KEEFFE

Sadly we are saying Goodbye to Mrs O' Keefe this week. Mrs O' Keefe has been leading SEND here at West Byfleet Junior's for 11 years and has been instrumental in leading the department. She will be greatly missed. We thank her for all her hard work.



2

L-SPA

Surrey County Council's Learners' Single Point of Access (L-SPA) offers help and support if you have a concern about the development and/or learning needs of a child in Surrey. Both parents and practitioners working with children in Surrey are welcome to call the L-SPA. It is open from 9am to 5pm, Monday to Friday, all year round (except Bank Holidays) on 0300 200 1015.

The L-SPA will:

- Aim to answer your call within 20 seconds.
- Will give children the right support and intervention at the right time to help them meet their learning and developmental milestones.
- Gives you direct access to information and advice from a multi-disciplinary team of professionals from education, health and social care including:
 - Occupational therapists
 - Specialist teachers
 - Qualified Social Worker
 - Speech and Language Therapists
 - Educational Psychologists

The L-SPA will not:

- Replace any existing referrals to learner services for the child in question.

If you are working with a child or young person in Surrey and you have concerns about their learning and/ or development, we recommend phoning the L-SPA helpline with your query. However, if your query is very complex, you may wish to contact the L-SPA using the Learners' Request for Support (0 to 25 years) for



4

MIND WORKS



Mindworks
Surrey

We regret to inform you that we have been notified by Mindworks (previously Childhood and Adolescent Mental Health Service, CAMHS) that they are still unable to receive any new assessment for needs referrals. This includes referrals for any ADHD and ASC assessments. We appreciate and share your frustration at the situations.

For more information about the services available from Mindworks please see <https://www.mindworks-surrey.org/>



5

FEEDBACK

We would love to hear your feedback on any topics or ideas you would like to see included in the newsletter going forward!

